

MX-ventilation products



Material

- Weatherproof and impact resistant polypropylene
- UV protected
- Solid coloured

1. Sewer ventilation pipe
2. Roof fan
3. Radon fan
4. Exhaust pipe
5. Roof fan
6. Ventilation pole



- ▶ Reliable and controlled ventilation
- ▶ High-quality and durable materials

- ▶ Easy installation
- ▶ Neat and elegant end result

Basic colours for roof products

- BLACK RR 33-RAL 9005
- GREY RR 23-RAL 7015
- BROWN RR 32
- RED RR 28/29-RAL 3009
- BRICK RED RR 750-RAL 8004

MX-pass-throughs

With the MX-pass-throughs, exhaust and ventilation pipes as well as roof fans can be led through roof structures tightly and neatly. The carefully designed shape prevents the accumulation of dirt and debris, and leaves sufficient room for insulation.

The MX-pass-throughs intended for steep roofs are compatible with all Meltex roof fans, exhaust pipes and ventilation pipes. Thanks to the guide groove in the pass-through plates, the lateral alignment of the installed equipment is maintained automatically. The pass-throughs are easy to install, and detailed installation instructions are supplied with the delivery. For additional information about the products, see the technical brochure.

MX-pass-through set for tile roof

Suitable for most double-wave roof tiles on the market. The adjustment discs allow for easy adjustment of the pass-through to suit various tiles.

Colour and product number

- 7830000
- 7830001
- 7830002
- 7830003
- 7830004

MX-pass-through set for steel roof

Suitable for most tile-patterned steel roofs on the market. A rubber seal that conforms to the roof profile and waterproofs the pass-through is included in the delivery.

Colour and product number

- 7830005
- 7830006
- 7830007
- 7830008
- 7830009

MX-pass-through set for standing seam roof

Suitable for flat, standing seam roofs. The pass-through is waterproof thanks to the rubber seal on the lower surface.

Colour and product number

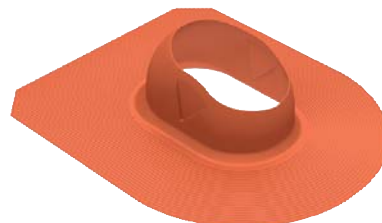
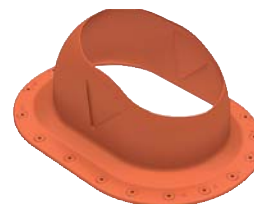
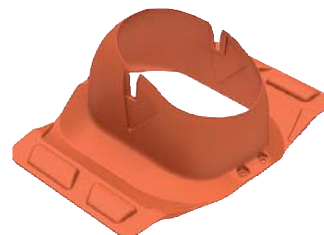
- 7830010
- 7830011
- 7830012
- 7830013
- 7830014

MX-pass-through for felt roof

Suitable for all felt roofs. Thanks to the angular shape of the connecting surface, the pass-through and the rubberised bitumen form a waterproof connection to surface felt and underlays.

Colour and product number

- 7830015
- 7830016
- 7830017
- 7830018
- 7830019



MX-exhaust ventilation pipe 125 and 160

MX-exhaust ventilation pipes are suitable for use as exhaust air diffusers in air conditioning systems. Thanks to the low pressure loss, exhaust air is efficiently expelled from the building.

The two size classes offer exhaust pipes for 125 mm and 160 mm ventilation ducts. The exhaust pipes are equipped with cows that prevent water from entering the ventilation duct. The efficient insulation prevents freezing in the winter.

MX-exhaust ventilation pipe 125, colour and product number

● 7830025 ● 7830026 ● 7830027 ● 7830028 ● 7830029

MX-exhaust ventilation pipe 160, colour and product number

● 7830030 ● 7830031 ● 7830032 ● 7830033 ● 7830034

MX-ventilation pipe 110, insulated

The MX-ventilation pipe is suitable for sewer ventilation, which is required in all buildings by virtue of building codes. Equipped with the cowl which is available as an accessory, the MX-ventilation pipe can also be used for radon and roof structure ventilation.

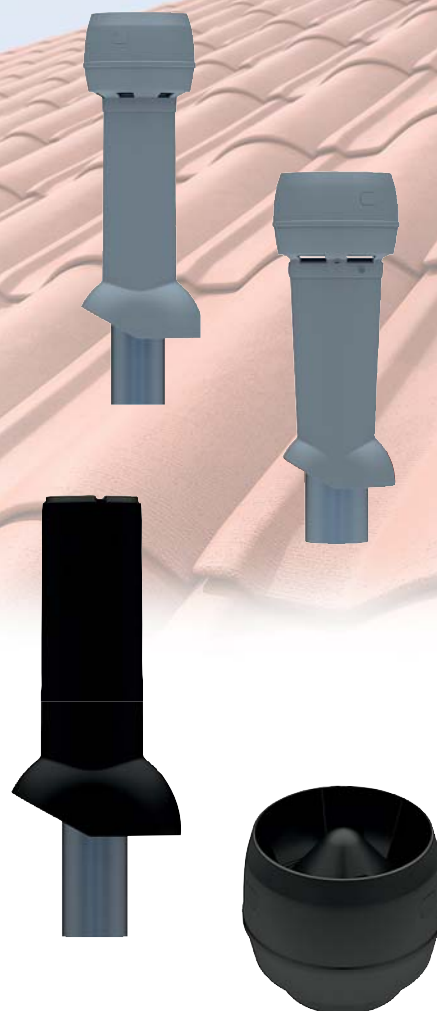
The MX-ventilation pipe is 560 mm high and the plastic inner tube can be tightly connected to 110 mm sewer pipes. In the winter, the pipe insulation prevents freezing caused by moisture rising from the sewer.

MX-ventilation pipe 110, colour and product number

● 7830020 ● 7830021 ● 7830022 ● 7830023 ● 7830024

MX-ventilation pipe cowl, colour and product number

● 7830063 ● 7830064 ● 7830065 ● 7830066 ● 7830067



MX-roof fans

With roof fans, the mechanical ventilation arrangements of various types of buildings can be implemented in a controlled and efficient manner. Roof fans can be used as separate exhausts for stoves or garages, for example, in which case the exhaust ventilation motor can be placed on the roof to reduce noise. In addition, silenced roof fans can be used if necessary. The pipe insulation ensures that the ventilation is also reliable in cold weather.

With MX-roof fans, the end result is always neat and elegant thanks to the impressive design, wide range of colour alternatives, and the wiring that is embedded in the body.

MX-roof fan 70/125 and 120/125

The roof fan model, which is available in two separate capacity classes, fits 125 mm ventilation ducts. Energy costs can be reduced by selecting the correct capacity, which prevents the use of an excessively powerful motor and the unnecessary cooling of the building.

MX-roof fan 70/125, colour and product number

● 7830035 ● 7830036 ● 7830037 ● 7830038 ● 7830039

MX-roof fan 120/125, colour and product number

● 7830040 ● 7830041 ● 7830042 ● 7830043 ● 7830044

MX-roof fans 120E/125 and 180E/160, silenced

The silenced roof fan is suitable for locations where it is necessary to minimize the noise caused by mechanical air exhaust. Of the silenced roof fans, 120E/125 fits 125 mm air ducts while 180E/160 fits 160 mm ducts.

MX-roof fan 120E/125, colour and product number

● 7830045 ● 7830046 ● 7830047 ● 7830048 ● 7830049

MX-roof fan 180E/160, colour and product number

● 7830050 ● 7830051 ● 7830052 ● 7830053 ● 7830054



MX-radon fan 110

The MX-radon fan is connected to the radon exhaust duct. It is used to increase the efficiency of radon removal from under floor structures. The motor designed for radon exhaust is energy efficient, and it does not cool the base floor excessively in the winter. The plastic inner pipe of the radon fan can be tightly connected to a 110 mm radon exhaust duct.

Colour and product number

● 7830055 ● 7830056 ● 7830057 ● 7830058 ● 7830059

MX-ventilation pole 160

The MX-ventilation pole has many purposes. It can be used to ventilate the base floor in all types of buildings and to lead in supply air. It can also be used as part of a radon ventilation system. Thanks to the colour options and shaping, the base floor ventilation can be implemented with style.

The structure also prevents debris, snow and small animals from entering the base floor. The low-loss ventilation pole is easy to install and adjust. The ventilation pole is 1,030 mm high. The suitable height can be achieved with add-ons. 330 mm add-ons are available as accessories.

MX-ventilation pole 160, colour and product number

○ 7830060 ● 7830061 ● 7830062

MX-ventilation pole add-on 330 mm, colour and product number

○ 7830071 ● 7830069 ● 7830070

Ventilation pole basic colours

- LIGHT GREY RR 21-RAL 7040
- BLACK RR 33-RAL 9005
- GREY RR 23-RAL 7015

